

Clay's Corner for March 2023

Providing news and views from a broadcast engineers
perspective since September 1986

As we approach Spring – It's Show Time! Here's a summary of some of the events on my Calendar –

MARCH 11th

The 41st Annual Mike and Key Club Electronics Show and Swap Meet at the Puyallup Fairgrounds Pavilion Exhibition Hall. This is, pretty much, a Saturday Morning event. You are welcome to join a number of current, and retired, broadcasters over breakfast at Odd Fellas at 730. (Next to the Sounder Station in Auburn). Many car-pool from Auburn.

APRIL 14-15

SBE Ennes Workshop at the NAB Convention, Las Vegas

SBE Schedule of Events

Friday, April 14

[SBE Ennes Workshop @ the NAB Show](#)

9:00 a.m. – 4:30 p.m.

- SBE registration required

Westgate Conference Rooms 7, 8, 9, 10

Saturday, April 15

[SBE Ennes Workshop @ the NAB Show](#)

9:00 a.m. – 4:30 p.m.

- SBE Conference registration required

Westgate Conference Rooms 7, 8, 9, 10

Certification Committee Meeting

6:30 – 10 p.m.

LVCC Meeting room TBD

Sunday, April 16

SBE Board of Directors Meeting

LVCC Meeting room TBD

SBE Booth Drawing \$200 Amazon Gift Card Giveaway

5 p.m.

SBE Booth TBD, sponsored by Nema Electronics

Monday, April 17

SBE Membership Meeting

5 – 6 p.m.

LVCC Meeting room TBD

SBE Booth Drawing \$200 Amazon Gift Card Giveaway

At the SBE Membership Meeting, LVCC W307/W309

drawing sponsored by Linkup Communications

Membership Meeting prize drawings:

- Prizes TBA

SBE Member Reception

6:15 – 7:15 p.m.

LVCC Meeting room TBD

APRIL 15-19

NAB Convention in Las Vegas, NV.

<https://nabshow.com/2023/>

Reports are there will be over 1000 exhibitors.

JUNE 2,3 &4

SEA-PAC Hamfest and ARRL Northwest Division Convention in Seaside, Oregon. For more information – info@seapac.org. – or- www.seapac.org

The big news in Seattle Radio is the format switch at Hubbards 98.9. Their Country Music Station 'The Bull' (KNUC) has been 'put out to pasture' as the station changed call letters to KPNW-FM and format to what's called 'Triple A' or Adult Alternative.

IMHO, there are several things that likely precipitated this change –

- Audacy's 'The Wolf' continued to lead in the two-station Country Music Race. Apparently being the 2nd rated Country station in this market was not economically viable.
- The fact that 'little' KEXP (Little meaning much smaller coverage area) was doing very well with their format that featured a type of music that was not found on commercial stations.
- The vacuum that was never filled (except by, perhaps KEXP) with the departure of Entercom's 'The Mountain' (also a Triple-A)



Now we have to wait and see how the station does with the new format. (Early returns look good) Certainly, Audacy will be pleased that they are now the only Country Station in the Market. Except for, perhaps, KGY in Olympia which has very limited coverage. The fact is Country is not as strong as it once was, with that being said, there may be a very low ranked FM that will be tempted to jump in. We will see.

One interesting aspect of this is their choice of call letters. The call – KPNW is used by an AM in Eugene



Looking at Wikipedia we find –

- [KPNW \(AM\)](#), a radio station (1120 AM) licensed to serve Eugene, Oregon,
- [KPNW-FM](#), a radio station (98.9 FM) licensed to serve Seattle, Washington,
- [KODZ](#), a radio station (99.1 FM) licensed to Eugene, Oregon, which held the call sign KPNW-FM from 1968 to 1994
- [KLCC \(FM\)](#), a radio station (89.7 FM) licensed to Eugene, Oregon, which held the call sign KPNW from January to August 1967

In the Seattle area we should be accustomed to this kind of call letter situation.

KING-TV and KING-FM – Both owned by different organizations

KIRO-TV and KIRO-AM & KIRO-FM – Radio and TV Stations owned by different companies.

Up until recently, we had a similar situation with KOMO

And the Headline Read –

Three seconds of audio could end up costing Fox \$500,000

Once again someone failed to understand that you don't use EAS Tones for anything but – **REAL – EAS Events**. In this case, Fox used the attention tone to promote an NFL show that aired on a number of channels.

This is, obviously, in the category of 'When will they ever learn'

This is not the only place where Fox is in trouble. It's recently come out that Fox, the Cable News Channel, was airing lots of content supporting the contention that Trump really won the presidential election while executives in the company knew it was not true. This reminds me of how similar Fox News is to the National Enquirer. Both run stories that are not true but continue to do so because they are providing their audience what they want to see/hear/read etc. In this more recent situation, a lot of 'beans' are being spilled with a lot of fall-out. This is going to be very interesting to see how it all unfolds.

The -KING5- Headline read –

King County property taxes increasing, pricing some out of their homes

I can understand this one as the Taxes on my home increased by \$1100 this year. Despite folks like Zillow and others showing how my home value went down. We have a neighborhood web site where many have posted comments on how they are extremely upset and are going to let their representatives feel their wrath. Seems to me that property taxes have a lot to do with the tax-based programs people have voted for (should I mention Sound Transit?) as well as market conditions and related property values that politicians have little to do with. Once again, underscoring how little 'Joe Average' understands about how our system of government really works.

One of my Sons recently re-located from Boise to South Carolina where they are buying a house that would, easily, cost triple in the growing Boise area.

I recently spotted a gas-price-sign in a news story about a shooting in Columbus, GA..



I understand there are differences in state taxes on Gasoline – Georgia pays 29.1 cents per gallon while Washington's tax is 49.4 cents per gallon. Just knowing that folks there are paying a Dollar a gallon less is still a bit hard to swallow.

Yes, we live in an expensive area! If you are considering retiring, you'd better have a nice, fat, nest-egg or you too may well be seeking a cheaper place to live.

Kudo's to the Seattle Times for an excellent story in the Feb 19th NW Magazine –

[As tech jobs melt, the trades beckon. This Tacoma plumber makes \\$140K+.](#)

[You don't need a four-year degree and massive college debt to make a very comfortable living. Around Seattle, jobs — and money — are waiting in skilled trades.](#)

One part of the piece related how the local Electrical Workers Union works to train new, upcoming, electricians. Many years ago, a large number of broadcast engineers, particularly in TV, were members of the Union. Now I read stories of how broadcast engineering positions are extremely hard to fill due to lack of applicants. Seems to me the Union saw this coming and prepared where broadcasting did not. Perhaps another factor is wages?

The FCC is, once again, making changes to EAS. This change will require EAS Equipment Owners to purchase an upgrade that would cause the unit to favor an Internet feed of an alert over one that may have come from legacy sources such as a local radio station etc. As is often the case, many broadcasters are pushing back citing how EAS is an un-funded federal mandate etc. This has started many of the broadcast oriented remailers to be a sounding board for those that feel the whole EAS should be scrapped etc.

The Commission is also, via Docket 22-329, making it a requirement that EAS participants report un-authorized access to their EAS equipment. This too has not been welcomed by many, including the NAB that's gone on record of calling the proposals as 'Expansive and Expensive'

For those of you that have the popular Sage Endec – Note the following-

This message is from Sage Alerting Systems regarding your Sage Digital ENDEC model 3644. It applies only to users in the United States.

An FCC Report and Order for PS Docket No. 15-94 adopting new rules to improve the clarity and accessibility of Emergency Alert System (EAS) messages recently went into effect with a compliance date of December 12, 2023. This R&O requires a significant change to EAS procedures, mandating that alerts received via over-the-air "legacy" EAS data tones be held while the possible presence of a matching IPAWS CAP alert is checked for and then used preferentially. There are a few other rules requiring changes on how the text for national alerts is constructed. A firmware update will be required to keep the ENDEC in compliance with the Part 11 rules.

Sage will release a paid update, called Rev96, in June. You should install the update before December 12, 2023 to be compliant with the new FCC rules. This is a pre-release announcement; the update is not yet available for download. We will send out another email when Rev96 is available.

The list price of the update is \$159, available from any of our distributors. Any Model 3644 Sage Digital ENDEC originally purchased new from dealer stock after December 12, 2021 (14 months prior to February 2023) is eligible for a free Rev96 update. This includes serial numbers B418750 to B429999.

Additional information: <https://www.sagealertingsystems.com/Rev96Questions.html>

List of Distributors: <https://www.sagealertingsystems.com/Distributors.htm>

In addition to the FCC required changes, we will also add several usability features, including automated emailing of log summaries and the conformance report. These two features should reduce the amount of time needed to acquire and review the log data, and reduce the number of people that need to access the ENDEC. It will help to further highlight compliance issues such as failure to receive RWTs and RMTs, and to send RWTs. The FCC also issued a notice of proposed rulemaking in October regarding security. The NPRM may or may not result in additional rules, however, Sage is proactively implementing some tools that may assist users in improving security, such as expanding our audit logs to include login/logout and failed login attempts. Our emailed conformance report will also assist with operational readiness.

If you have any questions regarding this update, please email us at support@sagealertingsystems.com or call 914-872-4069 and press 1 for support. If you get voice mail, please leave a message and we will return your call.

The National Radio Systems Committee, NRSC, is out with some new guidelines for EAS – Here's the link - [Inside the NRSC's New Guidelines for EAS Implementation - Radio World](#)

The latest 6+ PPM's (Radio Ratings) have been released by Nielsen ...Here are the highlights of the top performers. A number of changes can be seen in the post-Christmas numbers

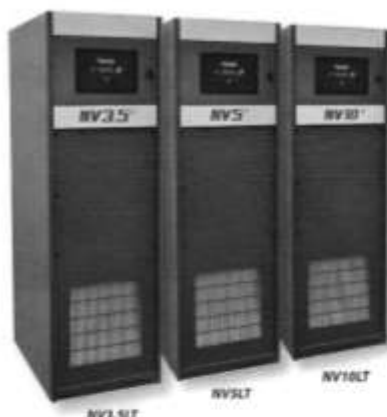
- Coming in at #1 is IHearts KJEB
- KIRO-FM - first look at this station after the loss of Dori Monson
- #3 is – All News- KNWN showing there is certainly life in AM Radio
- KEXP is on a roll at #4 – Will be interesting to see what impact the format change at 98.9 has on it.
- KUOW, once on top of the heap, is now down to #7
- KKWF, Audacy's 'The Wolf' is #10, tied with KQMV. Will be interesting to see just how much this jumps now that they are the only major Country Station with the departure of KNUC from the race.
- KPNW, the new call letters, and format, for 98.9, saw a big jump to #12
- Rounding out the top performers is KIRO-AM, likely suffering from the lack of professional sports games..

Did you remember to say good bye to Microsofts Internet Explorer on February 14th?.....It's gone.

One local firm has done very well in this industry – Tacoma based BSW – known then as Broadcast Supply West – Now Broadcast Supply Worldwide. Their latest catalog notes how the firm was started by Irv Law back in 1973. I too have memories of that little operation behind the Pinecone Café in Tacoma's University Place neighborhood. One of their businesses was re-winding audio cartridges. Now the firm is one of the major players in the business. The Pine Cone Café is still there, but BSW is now headquartered on 19th Street just about across the street from KBTC-TV.

As I thumbed through their latest catalog – Something jumped out at me. Whoa!.. Someone did not proof-read this page – See if you spot it.

World-Class RF with BSW and Nautel



nautel
ANALOG Radio Transmitters

Call BSW for All Your Nautel Needs

With over 50 years of constant innovation, Nautel is the recognized world leader in the design, manufacture, sales and support of high power, solid-state RF products for radio.

BSW carries the full line of Nautel RF equipment, and can supply you with the gear you need, in any configuration. Give us a call or drop us an email and we'll get it for you at the best possible price.

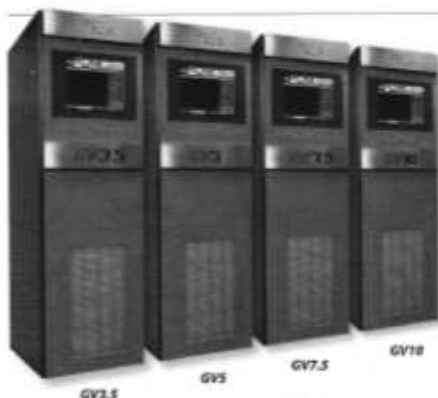
NVLT Series: Highly Efficient FM Transmitters For Significant Energy Savings

The NVLT Series of solid-state, modular analog/digital FM transmitters features 3.5 kW to 40 kW transmitters boasting the highest efficiency in their class to deliver significant energy savings.

Each design is optimized to offer the features you want without the extra cost for external combiners, exciter, control systems, instrumentation or system rack. Extensive redundancy in all models offers outstanding reliability. Call BSW for a custom quote.

- Proven NV Series architecture
- Highest efficiency in its class (72%) for significant energy savings
- Integrated direct-to-digital exciter
- IP audio and streaming input
- Award winning instrumentation and control
- Intelligent VS Series features
- Automatic fail-safe audio source
- Parallel power amplifiers, parallel power modules and switching power supplies
- Easy path to HD Radio® operation
- Call BSW for a custom quote.

NV3.5LT	3.5 kW, analog
NV5LT	5 kW, analog
NV10LT	10 kW, analog



GV Series: Intelligent, Analog/Digital FM Transmitters

The GV Series of digital FM transmitters boasts the industry's highest digital power outputs, commercial-grade instrumentation, advanced intelligent features such as dynamic RDS scrolling, and award-winning control via Nautel's AUI. Call BSW for full info and a custom quote.

- Field-proven, high-power architecture
- High digital efficiency
- HD Spectrum/Efficiency Optimizer
- Separate controller back-up user interface
- Site control functionality via AUI
- Dynamic RDS scrolling
- MPX over AES
- All DRM+ modes supported
- Reduced cost of ownership for IBOC

GV3.5D	3.5 kW, digital
GV3.5A	3.5 kW, analog
GV5A	5 kW, analog
GV5D	5 kW, digital
GV7.5A	7.5 kW, analog
GV7.5D	7.5 kW, digital
GV10A	10 kW, analog
GV10D	10 kW, digital



Low Power Single-Phase AC Transmitter

Power module integrating multiple RF amplifier units. The individual RF amplifiers and modulator units are connected to the power modules using plug-in industry standard "D" connectors and bolted directly to a heatsink. Servicing consists of simple exchange, using only a screwdriver. Component level repair can be performed at a workbench or near the transmitter using a convenient test cable that provides all test signals from the host transmitter.

- Automatic Standby
- Unattended Operation
- Maximum Redundancy
- Power outputs: 3 kW or 6 kW

XE3-1 PH	3 kW 1 phase, dual exciter, single phase AC
XE6	6 kW 1 phase, dual exciter, single phase AC

AM Radio continues to make the news with the announcement by Audacy they are going to shut down two of their AM Stations in Las Vegas – KDWN and KXST. One of the major factors in the decision was the pending sale of the property the stations towers sit on for \$40,000,000. Today, with the ever diminishing AM Radio Audience, it would perhaps be very difficult to obtain 40 mega-bucks in revenue from the stations. Certainly, this is not the first time that a broadcaster has been faced with the fact that the land where the stations transmitter is located is worth far-more than projected income making the decision rather easy.

In terms of technical operation ...These are not small stations.

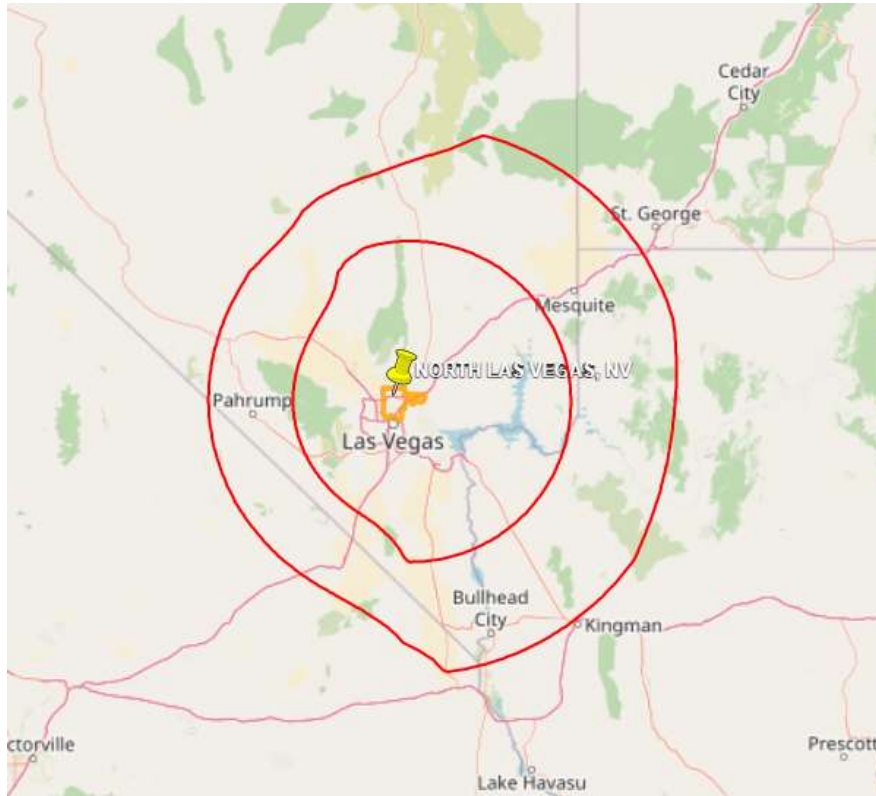
KDWN operates on 720 kHz with 25,000 Watts Day and 7,500 watts at night via a 3-tower directional antenna system. They were first licensed in 1975.

Here's what their Daytime Coverage looks like –



KXST, the smaller of the two, operates on 1140 kHz with 10,000 Watts Day and 2,500 watts at night via a 4-tower directional antenna system. They were first licensed in 1956

Their daytime coverage looked like this -



Where this will go from here is anyone's guess. At a minimum it demonstrates the changes that are taking place on the AM Band.

On the topic of Broadcasters shutting down – BBC's Arabid Radio is going off the air after 85 years of service. Reportedly 382 people are losing their jobs as the BBC shifts their focus to what they call 'Digital Content Production'

Meanwhile, Looking at the latest Seattle area Radio Ratings – KNWN (Formally KOMO-AM) seems to be doing well. Perhaps I should give some credit to their simulcast/rimshot FM on 97.7 or the fact they are also simulcasting on 101.5 HD2?

Meanwhile, over in Pullman – some equipment changes of note. A couple of miles from the campus of WSU, in the middle of an open area full of Cows (and Cow-Stuff) is a very tall tower and a nice building....the home Of KWSU. The 100 year old AM that's part of what's known of these days as NWPB or Northwest Public Broadcasting.

Near the entry to the building is this sign – (Apparently some cows can read)



A bit of 1250 history here –

KWSU operates on 1250 with 5,000 Watts. Yes, the same frequency as Seattle's historic KTW. Both of these stations go back 100 years. For many years the two stations operated what was termed a 'share-time' arrangement with KTW signing off to not interfere with KWSU at night. During the day - KTW operated with a non-directional antenna at Pigeon Point. Later owners of 1250, using various call letters, created a night-time directional array in Kirkland. When that went away, they operated at night with very low power from the Pigeon Point location. More recently their City of License was changed to Kent and their transmitting site is now in Auburn. They still protect KWSU at night.

KWSU, despite it's power-level, covers an extensive area due to not only its very tall tower, but the fact that it's located in an area of extremely good ground conductivity....Something AM Broadcasters in the Puget Sound area can only wish for.

A number of years ago, KWSU's transmitter was a classic/Legacy RCA, shown here.



Thanks to Jason Royals at NWPB for several of these pictures.

Here's a picture of NWPB Engineer Jim Boothby standing in front of that RCA, with the doors open. Yes, this was a Vacuum Tube Transmitter. Made before solid state transmitters were thought of.



Several years ago, WSU purchased a new Broadcast Electronics (BE) AM6A to serve as the stations Main Transmitter and the RCA was shifted to Auxiliary Duty. Due to reliability and support issues, it was, again, time for a new AM Transmitter.



To make room – It was time for the old RCA to go. Here you can see movers going out the door with it.



Today the number of manufacturers of 5,000 Watt AM Transmitters is very limited –

Of course, RCA is long gone, as are – Collins, Gates, CCA and others. The only maker of AM Transmitters now is Nautel. (Perhaps this is a commentary on the state of AM Broadcasting?) This is not a bad thing as Nautel has been turning out great products for a long time. In fact, many of the AM's in the Seattle area are using their products.

Meanwhile, Outside...– On the trucks lift-gate is the new transmitter. On the other side of that chunk of concrete at the bottom of this picture are the KWSU Call Letters shown earlier.

Look at the hill on the right – Yes, this is the Palouse! A beautiful Green in the Spring

The antennas on the ground (lower right) are part of a ‘collection’ of related items.



Coming out of its shipping crate, the new Nautel NX5



Out of the crate and ready to be moved into location currently occupied by the BE Transmitter (Pictured earlier) The BE will be moved to where the RCA was becoming the Stations Auxiliary.



Perhaps one of the biggest news stories this past month has been the shooting down of the so called, Chinese Spy Balloon?



Then came the news that we had shot-down a couple more UFO's. Apparently, the decision has been made, at least in these cases, to shoot them down as opposed to just wondering what they are or where they came from. These actions opened the flood-gates of UFO stories, videos, theories, etc, some from long ago.

One has to wonder what to expect if these 'gizmo's are, indeed, from 'out-there' and possess technologies that are far greater than our flying machines, what's next? Perhaps shooting them down is a way to find out more?

Perhaps telling how much some members of Congress learned in school...Representative Lauren Boebert (R-Colorado) said 'The Chinese balloon's altitude of 60,000 feet was a mile'



Jerry Olsen in Spokane recent received a number of strange messages on EAS Equipment –

I got several Snow Squall messages from our local NWS that my Sage didn't recognize. Is this a me or a them problem?

Ignored	02/21/23 16:27:24	Unknown Event, Received on Monitor 3. The National Weather Service has issued an Unknown Event (SQW) for Spokane, WA and Stevens, WA beginning at 4:27 pm and ending at 5:57 pm (KOTX/NWS)	
Ignored	02/21/23 15:29:02	Unknown Event, Received on Monitor 3. The National Weather Service has issued an Unknown Event (SQW) for Pend Oreille, WA, Spokane, WA, and Stevens, WA beginning at 3:28 pm and ending at 4:58 pm (KOTX/NWS)	

Lowell Kiesow, Vice Chair of the Washington SECC responded –

Hi Jerry,

SQW is an NWS SAME code, but it is not used by EAS. It is not listed in Part 11, hence the "unknown event." NWS has a few event codes that are not for EAS, and there are some that are defined in Part 11 that the SECC chose not to use in our state. There's a list of them in WAPAWS Tab B7. SQW must be a newer addition because it isn't on the list. I'll have to do an update.

Andy, at the National Weather Service added the following -

Lowell is correct. Snow Squall Warnings (SQW) are transmitted to the NOAA Weather Radios for play but should not be relayed through EAS. The National Weather Service has been testing Snow Squall Warnings over the last few years and recently expanded the capabilities at the NWS Spokane office this winter.

Currently, every SQW that we transmit will trigger a Wireless Emergency Alert (WEA). We will have a software build coming up in April that will allow us to determine if we want to trigger WEA or not.

I'm attaching a flyer that explains more about the Snow Squall Warning and the different "tags" that will accompany them soon.

<https://www.weather.gov/media/safety/Snow-Squall-IBW.pdf>

Bottom line – If you receive an SQW – Now you know!

I learned that Roy Topp passed in January. Ray was the owner and publisher of Radio Guide. The November-December 2022 issue (Vol 20, No 6) will be the last. Perhaps unique, the cover story features a story about Broadcast Tools with a picture of Don Winget on the front cover.



KNKX has moved out of their Seattle home for the past 22 years at 4th and Vine. Unlike most moves of this type, they are moving out, before, their new digs near the Pike Place Market is ready for occupancy. Thankfully they have a Tacoma facility from which they can originate programming. Their stated goal is to have the new location completed in May.

The FCC told us this was what they were going to do....Now they have issued 21 notices to landlords of pirate radio stations they would like to see go off the air adding they plan to increase enforcement efforts.

Typically the Commish has had major pirate issues in places like New York or Miami ...More recently they have gone after a property owner in Tulsa Oklahoma where they have advised a property owner they could face fines of \$2.3 million, or more.

The FCC is gearing up with more people and equipment to track these characters down and get them shut down. Now the question I always ask – Will these operators, and complicit property owners really end up paying any fines?

If you recall, I mentioned that KING-FM is getting a new Auxiliary Transmitter that will replace their 29 year old 1994 Continental. In preparation for this, the transmitter manufacturer, Nautel, will be incorporating what's called 'pre-correction' information in the design to compensate for variations in Magnitude and Group Delay in the Cougar Mountain Combiner system. This requires measuring what kind of 'load' the transmitter will have. This is what Stephan Lockwood, from Hatfield and Dawson is doing here –



According to a recent story in 'Moneywise' ...The average middle-class American household makes \$90,000 that's up from \$74,000 in 2010.

With the pace of inflation making everything cost more – this figure is certain to make a huge jump soon.

I don't know about you, but I find this picture amusing – A Tesla towing a Diesel Generator belching out a cloud of smoke. (Good job with photo editing)



Speaking of which, there is quite a bit of 'stink' being raised over the fact that some makes and models of EV's coming without AM Radio. It is suspected that this is easier (and perhaps cheaper) than resolving the AM interference issues created by the vehicles propulsion system.

How many what happened when Seattle got a new batch of Electric Busses? Perhaps providing that it can be done?

Then there are the comments of some who have expressed the thought that AM Radio no longer exists....To which I can say...Not yet. Seems to me when HD Radio came along, many would argue that it too did not exist.

It's reported that the Ford F-150 Lightning, Tesla, Volvo, Porsche and Audi have removed AM from their vehicles.

If you have ordered a piece of Broadcasting Equipment recently, you know that the time between the placement of the order and the receipt of the hardware has become extensive as supply issue continue to negatively impact manufacturers. This makes planning a project quite difficult. Often it takes quite a while to gain approval for some purchases, once granted, the expectation is that you will simply order the equipment and it will be operational in a few days...Not anymore! I recall, recently, shopping for something to find the vendors stating delivery was out a year.

If you are a manufacturer this is a big problem. Conventionally, you would not stock many of the components necessary to build a product but rather order them a bit ahead of need so your product could be constructed and shipped to the customer. Then there is the impact of all of this on the price of the product. Gone are the days when you could, safely, post the price for a piece of equipment. A manufacturer may not know, until the last minute, what their costs will be.

As you know, over the years I've been placing more pictures in this column...many of which from those of you that contribute them. If you are installing a new piece of equipment, or just come across a pretty or interesting picture – Please do send them my way.

They don't have to be of Broadcast things.

The following picture comes from Dave Frank at KSTW-TV who added that he has enjoyed this column over the years. Thanks Dave !!

Dave pointed out that this was the view of the Queen Anne Hill Towers from the roof of the Broadcast Apartments on East Capital Hill. The big building at the bottom of the frame is the old Queen Ann High School.

For those of you not familiar with these structures, they are, left to right –

KIRO-TV, KOMO & KUNS-TV, KING & KONG-TV. There are no longer any FM's on these towers, they all moved to West Tiger Mt.



I had to go up West Tiger recentlyElected to wait until later In the day. Turned out to be a good idea as I would not have been able to get there, unless I wanted to come in from the East side. Unfortunately, this is all too common.



The following picture, taken from one of the AccelNet Cameras shows my tracks.



A wonderful winter scene from Dwight Small



How about those things we don't say any more, and if we did, few would understand, or would get it wrong?

Telling time, before there were digital clocks – We all know what was meant by –

- Quarter after....
- Half past.....

Expressing an amount of money –

- A buck
- 2-Bits
- 4-Bits
- 6-Bits

And this one is scary ! “Hooking Up”For years it was a term used to describe many things –

- Hook up the Stereo
- Hook up the Antenna
- Hook up the trailer
- Etc

Yes, I am getting OLD ---Change that to ‘ Have gotten old’

And from the humor department -

Technically, Moses



**was the first person
with a tablet
downloading data
from the cloud**

A historic picture, for sure – Remember your first Color TV and the excitement of an NBC Show starting out this way. Betcha there are many that have no clue why it's still called the Peacock Network. Can you imagine having to get up and walk to the TV to change channels ??



Here's one that will take you – waaay back –

A couple of things about this Car Radio

- Note the 640 and 1240 Markers.
- Two different Sensitivity offerings – Town and Country
- That's rightNo FM in these days.
- No Digital Readout either....This model used the common 'Sliderule' dial with that little Red frequency Indicator being drawn along via what was known as 'Dial Cord'
- Anyone recall how you set the frequency on those 5 pushbuttons on the bottom? (Perhaps less confusing than trying to figure out today's HD Radio?)



The following are a number of pictures I recently ran across showing just how badly some people handle electrical wiring issues. You are, perhaps, thinking 'Third-World' country?. Betcha these pictures were taken of locations closer to home. Enjoy!

I have no idea of what we plugged in here – Perhaps it was the answer to a request to hide that ugly power cord? Yes, the captions are mine 😊

Honey, I got rid of that ugly power cord hanging on the wall

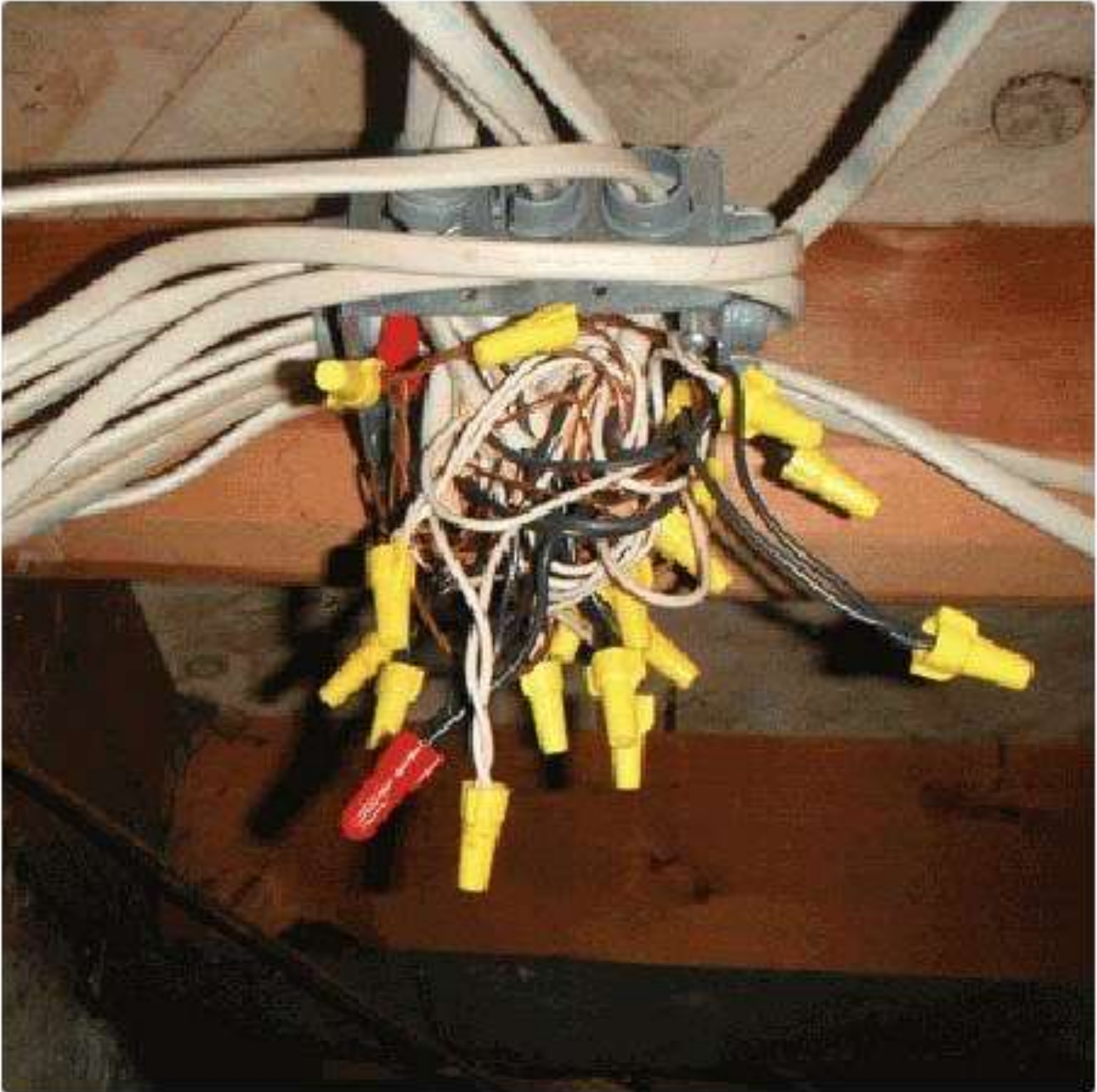


What do you mean that cord is too short – I can fix that !



What's wrong with this! ...

They made that junction box too small for the number of holes on the side



What's wrong with this, I don't have one of those fancy conduit benders.



The guy down at the hardware store told me ...Yah gotta put that in a Box.



And some morning son at the Summit of West Tiger on January 30th



That's it for this month.

Lord willing, I'll see you here next month.

THINK SPRING !!!!!

Clay, K7CR, CPBE

SBE Member # 714

Since March 1968